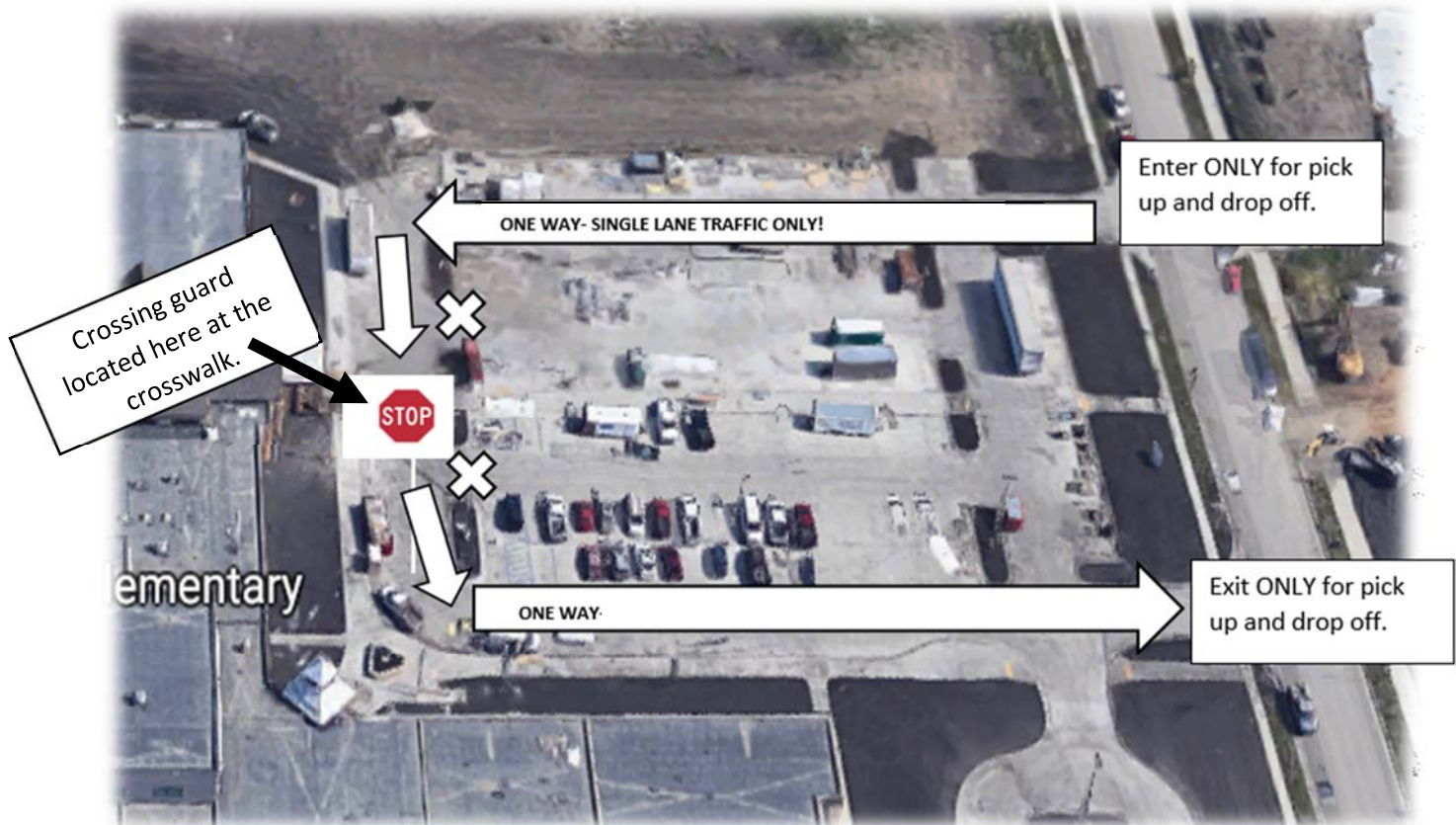


Revised Pick up and Drop off plan 2018-2019

Due to the safety concerns for our students we will be implementing a new parking lot system for drop off and pick up during the hours of 7:30am to 4:00pm. There will be NO PARKING along the curb during those times to allow for efficient flow of traffic. Please park in the parking lot if you need to walk your child in or drop off/pick up items any time during those times. **Student safety is our main priority!**



PLEASE NOTE UPDATED ITEMS TO ENSURE SAFETY OF OUR CHILDREN!

- Single lane of traffic only entering the parking lot for quick pick up along the north side.
- Quick pick up will take place after crossing the crosswalk. Then after picking up you may slowly pull out into the passing lane and exit the south side.
- There are only two points of pick up 1) Drive up along the curb 2) Student walks to the parking lot via the crosswalk and crossing guard. Parents can meet their child on the other side of the cross walk if they want or just wait in their vehicle.
- Note the white "X"s. These points are blocked off and you may not enter here.
- Students and parents must both use the crosswalk by the church to access the parking lot. No walking across the road is allowed in other areas to ensure safety of all people.
- For both pick up points, when the student sees their transportation they may walk to the vehicle.
- Please do not use the church doors to enter or exit the school.
- Please be respectful to all traffic. **Student safety comes first!**